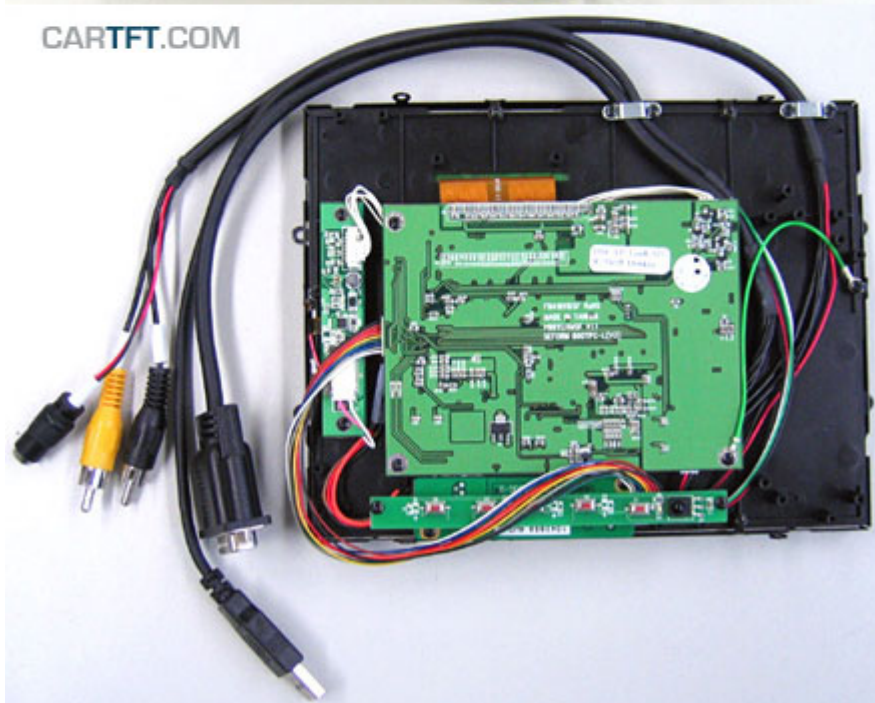




309.00 EUR  
incl. 19% VAT, plus [shipping](#)

- Open-Frame !
- LED Backlight !
- Auto Power On !



Support: [Dimensions](#) |  [Dimensions \(PDF\)](#)

**New** : LED-Backlight-Technology, with optimized color saturation enabling particular high and shining display. The scale of displayable color nuances is increased by 45% because of the new technology. Conventional LCDs are based on CCFL backlight, which can display approx. 72% of the standard color scale of NTSC (National Television Systems Committee). With LED-Backlight-Technology 104% of the NTSC-color scale can be displayed. This results in displaying in a highly realistic manner.

With the new Open-Frame TFT display-series from CarTFT you get back control : The ruggedized metal frame enables you a stable installation. The single modules (Mainboard, Touchscreen controller, Power inverter and button-frame) can be screwed off from the rear side and being positionated elsewhere. This way you can install the connector cables more easier and the display thickness shrinks also.

**Note** : This Open-Frame TFT display is an offer primarily meant for business and project customers. End consumers should only handle with unprotected electronic parts with appropriate experience.

**Possible additional options (starting from a MOQ of 20 units):**

- Speakers
- Different cable lengths

- Other display models/sizes
- Touchscreen RS232 instead of USB
- Other connector types
- [...] Ask us !

**Additional informations :**

With the touchscreen functionality you easily can control your PC. The brilliant VGA-display ensures a maximum readability and sharpness.

AC-Adapter for home usage and a car cigarette lighter adapter are included.

The CTF-800ML can be used with any PC/MAC with VGA- and USB port.

Driver-CD included, compatible with :

- Windows 95/98/ME/NT4/2000/XP/7/8/8.1/10
- XP Tablet PC Edition
- Windows CE 2.12, 3.0, .net
- Linux RedHat, Mandrake, ...
- Macintosh OS 9.x, 10.x
- DOS, ...

| <b>Specifications</b> |  |
|-----------------------|--|
| Screen size           | 8.0" digital   |
| Aspect Ratio          | 4:3 wide TFT screen  |
| Dot Resolution        | 2400x600= 1,440,000 dots   |
| Physical Resolution   | 800x600  |
| Supported Resolutions | 640x480-1920x1080  |
| Color configuration   | RGB stripe   |
| Brightness            | 600 nits   |
| Contrast              | 500:1  |
| Operating temperature | -30°C to 85°C  |
| Power input           | DC 9-30V   |
| Power consumption     | max. 10W   |
| Video system          | 2x Video inputs (PAL/NTSC)<br>1x VGA input   |
| Dimensions            | 185.6 x 143.6 x 27 mm<br>Display : 162 x 121.5 mm  |
| Video input signal    | 1.0Vp-p, composite video   |
| Features              | Full function OSD control (englisch)<br>Auto Power On/Off<br>LED backlight<br>Autodimmer |
| What is included ?    | - 8.0" VGA Open-Frame Touchscreen TFT with Video-support                                 |
|                       | - Power Adapter f. EU 230V   |
|                       | - Cigarette Lighter Adapter  |
|                       | - Touchscreen Driver-CD  |
|                       | - Manual   |